

# Cover Slips

- Excerpt from Bellco Glass products -  
- total price list on request -

The photo-etched coverslips help you to observe and evaluate micro manipulated cells or chromosome spreads. The photo-etched grid on the cover slip is comprised of individual alphanumeric coded squares of 0.6 x 0.6 mm. Up to 520 squares on one single cover slip facilitate the tedious work of evaluation of chromosome spreads. Forget double counted cells or chromosomes and save a lot of time and labour with the photo-etched cover slips.

## Photo-etched Cover Slips

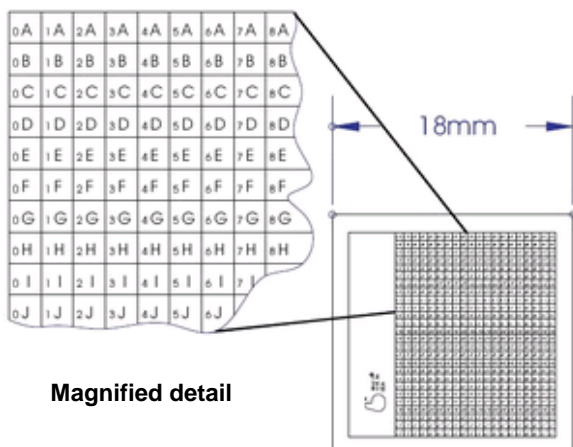
- Coding facilitates micromanipulation of cells or analysis of chromosome spreads
- Manufactured from Schott D263 glass ("German Glass") for fluorescence and confocal microscopy
- Coded area each square: 0,6 x 0,6 mm
- Glass thickness:  
square: 0,19 mm - 0,25 mm (# 1,5)  
round: 0,13 mm - 0,16 mm (# 1)

Reference: Lin, Pin-Fang and Frank H. Riddle 1981.  
Photoengraving of Cover Slips and Slides to Facilitate  
Mounting of Micromanipulated Cells or Chromosome  
Spreads, Exp. Res. 134:485-488

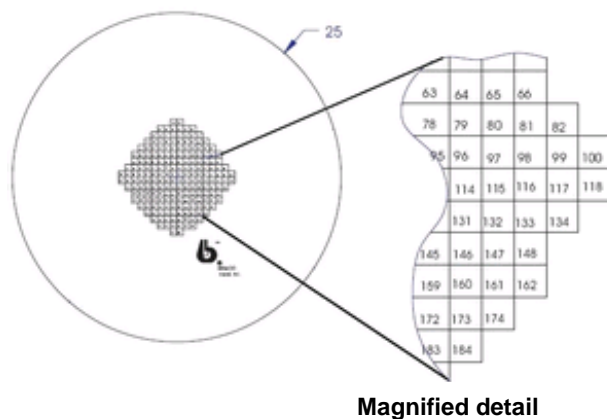


Cat. No.	Size	Squares	Unit
1916-91818	square, 18 x 18 mm	520	25
1916-92525	square, 23 x 23 mm	520	25
1916-91012	round, 12 mm	100	25
1916-91025	round, 25 mm	200	25
1943-70000	Vacuum Pick-up Tool, facilitates the handling of coverslips		1

### Coding for square cover slips



### Coding for round cover slips



## Rectangular and Square Cover Slips

- Manufactured from Schott D263 glass ("German Glass") for fluorescence and confocal microscopy
- Glass thickness: 0,13 mm – 0,16 mm (# 1)



Cat. No.	Size	approx./cs.
1916-09009A*	9 x 9 mm	100
1916-09022A*	9 x 22 mm	100
1916-09035A*	9 x 35 mm	100
1916-09050A*	9 x 50 mm	100
1916-10522A*	10.5 x 22 mm	100
1916-10535A*	10.5 x 35 mm	100
1916-10550A*	10.5 x 50 mm	100
1916-13054A*	13 x 54 mm	100
1916-12222A	22 x 22 mm	100
1916-24050A	24 x 50 mm	100
1916-25075	25 x 75 mm	100

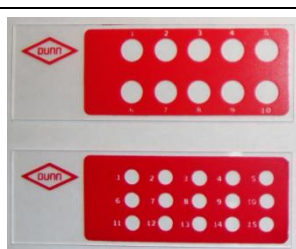
\* For use with Bellco Leighton Tissue Culture Tubes. Additional information upon request.

## Round Cover Slips

- Manufactured from Schott D263 glass ("German Glass") for fluorescence and confocal microscopy
- Glass thickness: 0,13 – 0,16 mm (# 1)
- Highest chemical resistance
- Ideal for neural tissue culture and hard-to-attach cells
- Specially developed for fluorescence and confocal microscopy with very low background fluorescence



Cat. No.	Diameter	approx./cs.
1943-00005	5 mm	100
1943-10012A	12 mm	100
1943-10015A	15 mm	100
1943-10025A	25 mm	100



## Multipot Microscope Slides

for Immunofluorescence Tests  
and Cell Culture

More information on request

