

# Antibodies, Antigens, Proteins ELISA Kits Plasma, Sera & Whole Blood Reagents and Substrates



	<p><b>Immunology Consultants Laboratory - USA</b></p> <ul style="list-style-type: none"> <li>◆ <b>Antibodies</b> to Animal-, Human-, Virus Proteins, Affinity and Epitope Tags</li> <li>◆ <b>Infectious Disease Antigens &amp; Antibodies, Protein Reference Standards</b></li> <li>◆ <b>ELISA Kits:</b> large selection, pls. enquire</li> <li>◆ <b>Mouse Antibody Isotyping Kit</b></li> </ul>
	<p><b>Innovative Research - USA</b></p> <ul style="list-style-type: none"> <li>◆ <b>Human and Animal Plasma, Sera, Whole Blood, Complement and Red Blood Cells</b></li> <li>◆ <b>Disease State Plasma</b></li> <li>◆ <b>Biological Fluids (Ascites – Urine)</b></li> <li>◆ <b>Antibodies, Proteins and ELISA Kits</b></li> </ul>
	<p><b>Meridian Life Science - USA</b></p> <ul style="list-style-type: none"> <li>◆ <b>Antibodies</b></li> <li>◆ <b>Antigens</b></li> <li>◆ <b>Recombinant Proteins</b></li> <li>◆ <b>Assay Blocking, Detection &amp; Stabilising Reagents</b></li> </ul>
	<p><b>Moss - USA</b></p> <ul style="list-style-type: none"> <li>◆ <b>Substrates</b> for ELISA, Blotting, IHC and Microarray Chromogenic and Chemiluminescent</li> <li>◆ <b>Conjugates</b> for HRP, AP, PE</li> </ul>
	<p><b>NeoMarkers / LabVision - USA</b></p> <ul style="list-style-type: none"> <li>◆ <b>Antibodies</b>, many for Immunohistochemistry (PS)</li> <li>◆ <b>Antibodies for IVD use</b></li> <li>◆ <b>Detection systems and -reagents for IHC</b></li> </ul>

**Please do not hesitate to contact us for further information.**



**Immunology Consultants Laboratory, Inc.**

### ⇒ Mouse Antibody Isotyping Kit

### ⇒ Specific Antibodies to:

- **Proteins of different Species**  
Bovine, Canine, Chicken, Cotton Rat, Feline, Gerbil, Goat, Guinea Pig, Hamster, Horse, Human, Llama, Monkey, Mouse, Pig, Rabbit, Rat, Sheep
- **Affinity and Epitope Tags**  
6xHIS, AU1, Beta Galactosidase, Calmodulin Binding Peptide, C-MYC, E-tag, FLAG, GFP, Glu-Glu, GST, HA, HSV, Maltose Binding Protein, S-tag, T7, V5, VSV-g
- **Infectious Disease Reagents**  
Chikungunya, Cl. difficile, Cryptosporidium, Dengue NS1, Hepatitis B, Malaria (HRP II, Aldolase, MSP1), Rabies Virus, Streptococcus Group A, Vibrio Cholera Toxin, Zika
- **Antibodies for Veterinary Diagnostics**  
Canine Corona, -Distemper, - Heartworm, - Parvo, Classical Swine Fever Virus E2, FeLV, FIPV, PEDV
- **Antibodies to Other Antigens**  
Biotin, BrdU, Digoxigenin, KLH, Protein A, Protein G, Streptavidin, T4
- **Protein Reference Standards**  
Bovine, Canine, Chicken, Feline, Horse, Human, Mouse, Pig, Rabbit, Rat

### ⇒ Antigens and Proteins:

12 Tag Protein, Cat Haptoglobin, Chikungunya, Classical Swine Fever Virus, Dengue Virus NS1 Type 1, 2, 3, 4, Dog CRP, FeLV p27 Protein, FIPV Nucleocapsid, GFP, Plasmodium falciparum HRP2 Protein, PEDV, PLBL2, PRRSV Nucleocapsid

### ⇒ ELISA Kits to Proteins for different Species:

(Bovine, Cat, Chicken, Dog, Guinea Pig, Hamster, Horse, Human, **Monkey**, Mouse, Pig, Rabbit, Rat, Sheep)  
Adiponectin, Albumin, Alpha 1-Acid Glycoprotein, Alpha 1-Antichymotrypsin, Alpha-1 Antitrypsin, Alpha 1-Microglobulin, Alpha-2 Macroglobulin, Antithrombin, Apolipoprotein A1 and -H, Beta 2-Microglobulin, C3, Ceruloplasmin, Clusterin, CRP, Cystatin, FABP, Ferritin, Fetuin, Fibrinogen, GST, GST alpha, GST Yb1, Haptoglobin, Hemoglobin, Hemopexin, IgA, IgD, IgE, IgG's, IgM, IgY, IL 6, Kappa, KIM-1, Lactoferrin, Lambda, Leptin, LRG1, MMP-9, Myeloperoxidase, Myoglobin, NGAL, Osteopontin, Ovotransferrin, PLBL2, Plasminogen, Prealbumin, Presepsin, RBP, SAA, SAP, Sclerostin, Thiostatin, TNF alpha, Transferrin, Vitamin D Binding Protein



### Programme Overview:

- Assay Detection & Misc. Reagents
- Autoimmune Reagents
- Cancer Markers
- Cardiac & Metabolic Disorders
- Drug Testing
- Hormones & Fertility
- Immunoglobulins (Animal & Human)
- *Infectious Diseases & Toxins*

### Infectious Disease Antigens & Antibodies to:

Adeno, AAV, Aflatoxin, Alpha, Aspergillus, Astro, Bacillus, Bacteroides, Bordetella, Borrelia, Brucella, Campylobacter, Candida, CDV, Chikungunya, Chlamydia, Cholera, Clostridium, CMV, Corona, Coxsackie, Cryptococcus, Cryptosporidium, Dengue, Diphtheria, E. coli, Ebola, EBV, Echo, Entamoeba, Enterobacteriaceae, Enterococcus, Enterovirus, FIV, FeLV, Foot and Mouth, Francisella, Giardia, Hanta, Heartworm, Helicobacter, Hepatitis, HFRS, HHV, HIV, HPV, HSV, HTLV, IBV, IBDV, Influenza, JEV, Klebsiella, LCMV, Legionella, Leishmania, Leptospira, Listeria, LPS, Malaria, Marburg, Marek, MRSA, Mumps, Mycobacterium, Mycoplasma, Neisseria, NDV, Nipah, Norovirus, Parainfluenza, Parvo, Plasmodium, Pneumocystis, Poliovirus, Pseudomonas, Rabies, Rhinovirus, Rotavirus, Rubella, Rubeola, RSV, Salmonella, SARS-CoV, Shiga Toxin, Shigella, Staphylococcus, Streptococcus, TGV, Tick-borne Encephalitis, Toscana, Toxoplasma, Treponema, Trichomonas, Trypanosoma, Ureaplasma, Vaccinia, VZV, West Nile, Yellow Fever, Yersinia, **Zika**, etc.

**Recombinant Allergens:** Animal Epithelial, Dust Mite, Pollen, Mold

**Assay blocking, detection, and stabilising reagents**



## Human and Animal Biologicals

**Animal Plasma and Serum** (Beagle, Bovine, Canine, Chicken, Goat, Goettingen Mini Pig, Guinea Pig, Hamster (Syrian Gold, Armenian), Mouse (Balb C, CD-1, C57BL6, Non Swiss Albino), Porcine, Rabbit, Rat (Lewis, Sprague Dawley, Wistar), Turkey, Sheep  
**Animal Whole Blood & Defibrinated, Lysed and Laked Blood**

**Red Blood Cells, Human & Animal** (Canine, Chicken, Goat, Guinea Pig, Mouse, Porcine, Rabbit, Rat, Sheep, Turkey)  
**Complement Preserved Animal & Human Serum**

**Human Whole Blood**

**Human Plasma and Serum (Single Donor, Pooled) & Charcoal Stripped / Defibrinated / Delipidized**

**Human Donor Matched Set** (Serum, Plasma, Whole Blood, Urine, Saliva, etc. from a Single Donor)

**Factor Deficient and Depleted Plasmas** (ATIII, Apolipoprotein H, C4, CRP, Factor II, -V, -VII, -VIII, -IX, -X, -XI, -XII, Ferritin, PAI-1, PAI-1 & tPA, Plasminogen, Protein S, Renin/Prorenin, Serum Amyloid A, tPA)

**Disease State (Alzheimer – Ulcerative Colitis) & Cancer (Bladder – Uterine) Plasma and Serum**

**Human Biological Fluids** (Ascites, Breast Milk, Cord Blood/Plasma/Serum, Nasal-, Pleural Fluid, Saliva, Semen, Urine)

## Antibodies, Proteins (Animal, Human, Plant) & ELISA Kits (Animal, Human)

**Albumins and Enzymes**

**Antiplasmin/Alpha 2-Antiplasmin** – Proteins, Antibodies, ELISA Kits (Human, Mouse)

**Antithrombin III** – Proteins, ELISA Kits (Human, Mouse, Rabbit, Rat)

**Apolipoproteins** – ELISA Kits (AI, AII, B, CI, CII, CIII, E, H)

**Bovine Serum Albumin** – Protein, Antibodies

**Coagulation Factors** – Antibodies, Proteins, ELISA Kits - **Factor V-XIII, HCII, Kallikrein, Kininogen, Protein C/S, Pro-/Thrombin, Tissue Factor, TFPI, vWF** (Bovine, Dog, Human, Porcine, Mouse, Rat)

**CRP** – Antibodies, Proteins, ELISA Kits (Dog, Human, Mouse, Porcine, Rabbit, Rat)

**Elastase** – Proteins (**Human Neutrophil**, Mouse-, Porcine-, Rat Pancreatic, Pseudomonas Aeruginosa)

**Fibrinogen** – Proteins, Antibodies (Bovine, Dog, Human, Mouse, Porcine, Rabbit, Rat, Sheep)

**Fibronectin** – Proteins, Antibodies, ELISA Kits (Hamster, Human, Mouse)

**Immunoglobulins** (Purified), Human & Animal (Bovine, Beagle, Dog, Donkey, Goat, Guinea Pig, Hamster, Horse, Mouse (BalbC, CD-1, C57BL6), Porcine, Rabbit, Rat, Sheep)

**Neuroserpin** - Antibodies (Mouse)

**Plant & Bacteria Proteins**

**Plasminogen Activator Inhibitor 1 (PAI-1)** – Proteins, Antibodies, ELISA Kits (Human, Mouse, Porcine, Rabbit, Rat)

**Plasminogen/Plasmin** – Proteins, Antibodies, ELISA Kits (Bovine, Chicken, Dog, Human, Mouse, Rabbit, Rat)

**Prolactin/-Receptor** – Proteins, Antibodies, ELISA Kit (Human, Mouse, Rat)

**Prorenin/Renin** – Proteins, Antibodies, ELISA Kit (Dog, Human, Mouse, Rat)

**Protease Nexin 1** – Protein, Antibodies (Mouse)

**Receptor Associated Protein (RAP), LRP, VLDL Receptor** – Proteins, Antibodies (Human)

**Tissue Plasminogen Activator (tPA)** – Proteins, Antibodies, ELISA Kits (Human, Mouse, Porcine, Rabbit, Rat)

**Urokinase (uPA)** – Proteins, Antibodies, ELISA Kits (Dog, Human, Mouse, Rabbit, Rat)

**Urokinase Receptor** – Protein, Antibodies (Mouse)

**Vitronectin** – Proteins, Antibodies, ELISA Kit (Bovine, Human, Mouse, Porcine, Rabbit, Rat)





## High Quality Stable Liquid Substrates, Conjugates and Stabilizing Diluents for Immunoassays, Flowcytometry and Multiplexing Platforms such as Luminex®

### Substrates for HRP

> Soluble Substrates:

> Insoluble Substrates:

(Most are 1 component)

**TMB-E** suitable for most ELISA assays, **TMB-HK** High Kinetic TMB, **TMB-US** Ultra Sensitive TMB, **ABTS**

**TMB-M** produces a stable, insoluble aquamarine blue precipitate in Blots, **TMB-MX** also for Microarrays and Microchips, **TMB-H** also for IHC procedures and *in situ* hybridization, **DAB**

**NEW**

**ChemiHRP (2 component)** stable enhanced, high sensitive **chemiluminescent HRP substrate** suitable for ELISA assays and Westernblot **ChemiHRP-Dil**, diluent for 1 component (Enhanced Luminol Solution)

### Substrates for ALP

> Soluble Substrates:

> Insoluble Substrates:

(Most are 1 component)

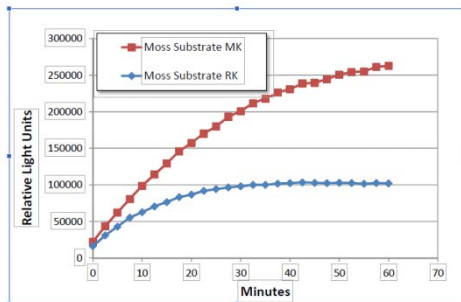
**p-NPP** excellent substrate for ELISA assays

**BCIP/NBT** for immunoblotting, producing a deep purple reaction product, **BCIP/NBT Plus** also for IHC procedures and *in situ* hybridization, **Fast Red**

**NEW**

**ChemiAP (1 component)** stable enhanced, high sensitive **chemiluminescent AP substrate** suitable for ELISA assays and Westernblot (2 options: MK and RK) **ChemiAP-Dil**, diluent for the substrates

The difference between ChemiAP RK and MK Substrates



RK (Rapid Kinetic Substrate) has a strong initial activity and reaches 90 % of maximum signal after approximately 20 minutes.

MK (Maximum Kinetic Substrate), a more powerful substrate, has a higher initial reaction rate than RK and produces 90 % of maximum signal after approximately 45 minutes.

Both substrates will emit light for several hours.

### Stabilizing Diluents

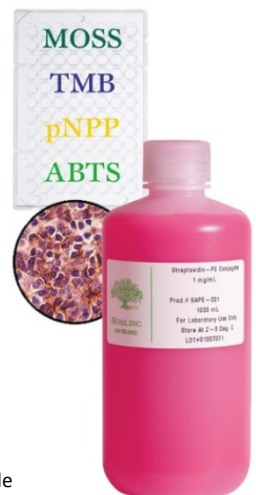
These products help improve stability of Enzyme-Antibody/-Antigen conjugates in their ready-to-use form.

- > AP Conjugates
- > HRP Conjugates
- > PE Conjugates

### Liquid Stable Conjugates **NEW**

- > Streptavidin-HRP Conjugates
- > Streptavidin-AP Conjugates
- > Streptavidin-PE Conjugates (SAPE conjugates are recommended by **Luminex®**)

Antibody-PE Conjugates



MOSS products are produced in large scale, from batch sizes of 100 liters to 2000 liters for substrates and in gram scale for conjugates. All products are offered in liquid stable format with shelf life of 24 months to 48 months and can be packaged to meet individual customer's requirements. Diligent adherence to manufacturing guidelines and quality systems results in excellent sensitivity, low backgrounds and lot-to-lot consistency.