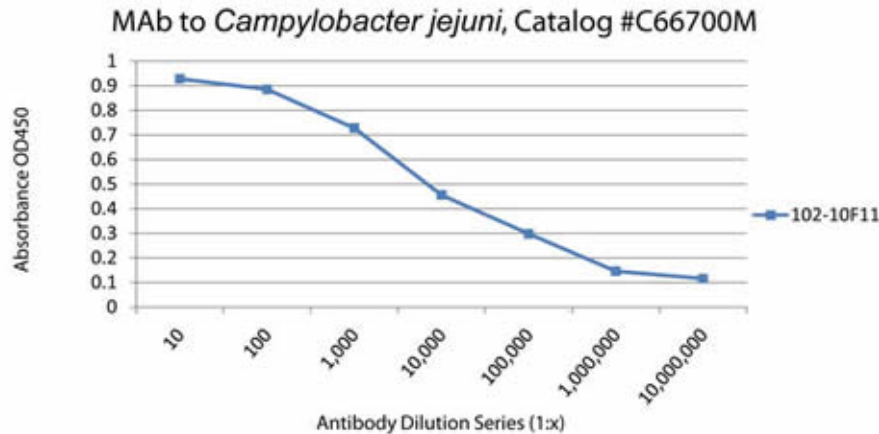


Meridian Life Science, Inc. announces launch of a **NEW**

## Monoclonal antibody (MAb) to *Campylobacter jejuni* (*C. jejuni*) Catalog # C66700M!

This new MAb is specific for *C. jejuni* in ELISA and does not crossreact with *H. pylori*, *S.typhimurium*, *S. sonnei*, *P. aeruginosa*, *Yersinia* and *Citrobacter*. The following is the titration curve of C66700M (Clone #102-10F11) in an indirect ELISA assay:



**Antigen:** *Campylobacter jejuni* ATCC #29428, coated at approx.  $10^8$  bacteria per well.

**Antibody:** Dilution series of C66700M, incubated 1 hour at room temperature followed by Goat anti Mouse IgG:HRP conjugate and TMB substrate.

A complete listing of all of the MLS *C. jejuni* products along with a brief overview of each product may be viewed [here](#).

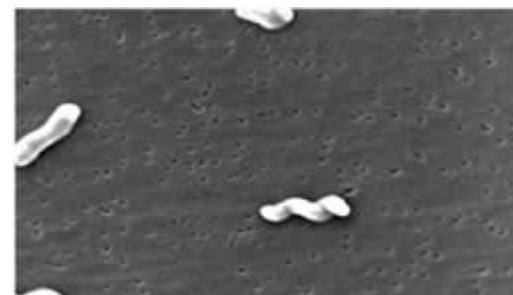
*Campylobacter jejuni* is a leading cause of bacterial diarrhea, known as Campylobacteriosis, in the United States. It is estimated that the number of cases exceed the number of cases of salmonellosis (2 to 4 million/year).<sup>1</sup> This gram negative bacteria is found in raw chicken, raw milk and non-chlorinated water.

Besides diarrhea, symptoms include fever, abdominal pain, nausea, headache and muscle pain. Illness occurs 2–5 days after ingestion and typical duration is 7–10 days. Most infections are self-limiting and do not require treatment with antibiotics. Long-term consequences do occur, however they are rare. The infective dose is believed to be very small, 400-500 bacteria. People at greater risk include:

- young children
- the elderly
- pregnant women
- people with weakened immune systems

Methods of diagnosis include stool culture, antibody and antigen quantitative and qualitative immunoassays and Rapid tests.

*C. jejuni* is a slender, curved and motile rod that is microaerophilic (reduced requirement for oxygen). It is fragile and sensitive to environmental stress such as heat from cooking, pasteurization or chlorination. This bacteria varies in width from 0.2-0.9 micron and varies in length from 0.5-5.0 micron. It exhibits rapid, darting motility in corkscrew fashion using a single flagellum or 2 flagella and it possesses a lipopolysaccharide endotoxin.<sup>2</sup>



Scanning electron micrograph depicting *C. jejuni*

## Complete Listing of all MLS Campylobacter jejuni products

Catalog #	Type	Specificity	Source	Format	Unit	Clone #	Isotype	Tested Applications
R14900	Ag	Campylobacter jejuni Antigen	C. jejuni Culture	Purified	1mg			
C66700M	MAb	Campylobacter jejuni	Mouse	Purified	1mg	102-10F11	IgG2b	EIA
C61202M	MAb	Campylobacter jejuni	Mouse	Dil.Ascites	1mL	57-24	IgG3	
C65727M	MAb	Campylobacter jejuni	Mouse	Purified	100ug	BDI727	IgG1	EIA,WB
C65717M	MAb	Campylobacter jejuni	Mouse	Purified	100ug	BDI717	IgG1	EIA,WB
C86082M	MAb	Campylobacter jejuni	Mouse	Purified	1mg	B082M	IgG1	EIA,WB
C86083M	MAb	Campylobacter jejuni	Mouse	Purified	1mg	B083M	IgG2b	EIA,WB
C86326M	MAb	Campylobacter jejuni	Mouse	Purified	1mg	B140M	IgG2b	EIA,WB
C01482M	MAb	Campylobacter jejuni Types 1 and 2, non-flagellar	Mouse	Purified	1mg	B617M	IgM	EIA,IFA
G5V04-500	PAb	Campylobacter jejuni	Goat	Aff.Pur.	0.5mg			EIA

**Dunn Labortechnik GmbH · Thelenberg 6 · 53567 Asbach**

Tel. 0 26 83 / 4 30 94 · Fax 0 26 83 / 4 27 76 · e-mail: [info@dunnlab.de](mailto:info@dunnlab.de) · Internet: [www.dunnlab.de](http://www.dunnlab.de)