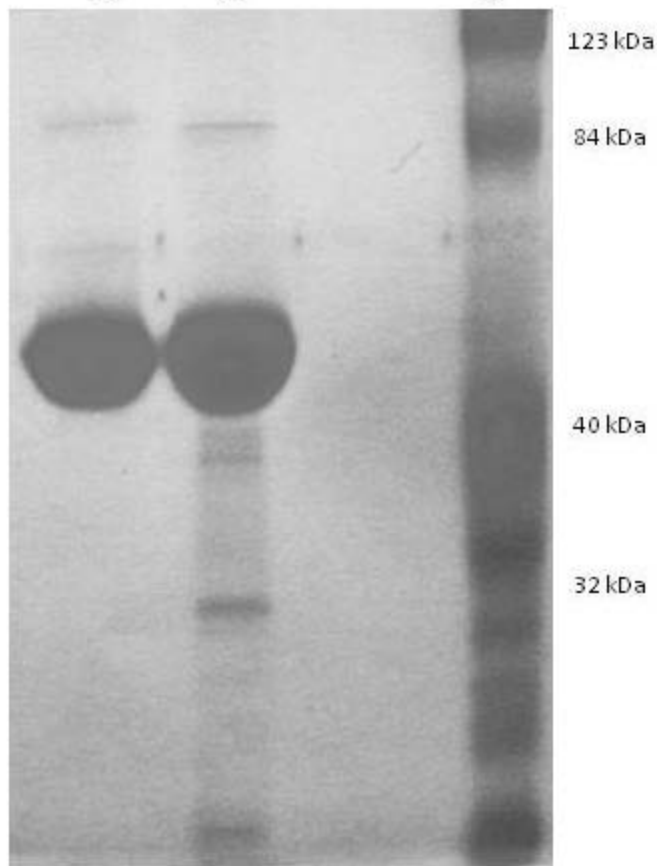


1 2 3



10% SDS PAGE

- 1) Innovative Research's human prorenin (10 ug) \*
- 2) Competitor's human prorenin (10 ug) \*\*
- 3) Molecular weight markers

---

\* concentration determined by theoretical extinction coefficient (0.1%) = 1.1

\*\* concentration determined by Bradford protein assay