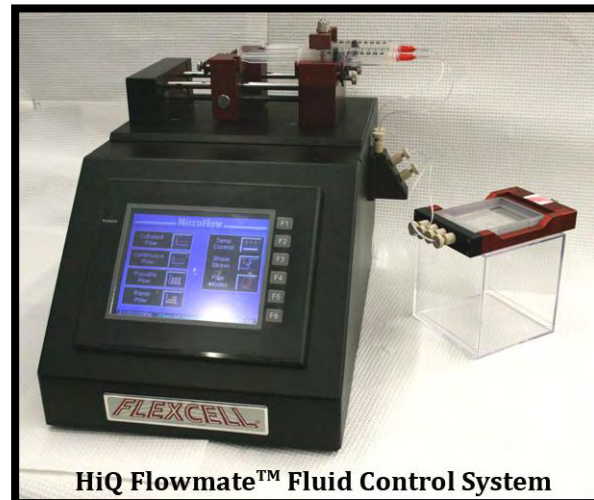


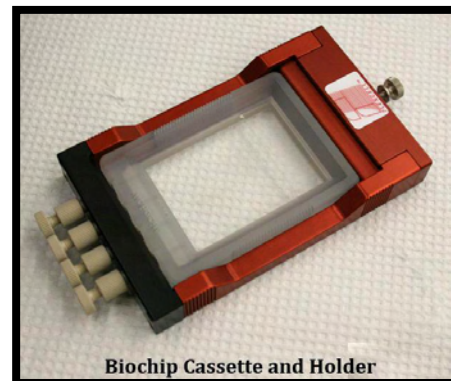
HiQ Flowmate™ Fluid Control System

Features:

- Accurate and precise steady flow modes:
 - ✓ Constant steady flow
 - ✓ Pulsatile flow
 - ✓ Continuous flow
 - ✓ Ramp flow
 - ✓ Oscillating flow
 - Broad ranges of flow rates
 - Dual independent fluid drive systems
 - Continuous fluid flow in controlled loop
 - High resolution touch screen interface
 - User friendly, Icon driven programming with *HiQ Eusoft™
 - Flexcell's *HiQ Flowmate™ Chip Cassette with application-driven biochip designs
 - Flexcell's *HiQ Flowmate™ Chip Cassette Bay for easy docking, tubing connections of pump to chip
 - Coming soon:
 - Mini incubation chamber for *HiQ Flowmate™ Chip Cassette Bay
 - *Biochip designs for shear stress, microstrain, cell viability, cell migration and toxicity
- *Patent Pending Flexcell International Corp.*



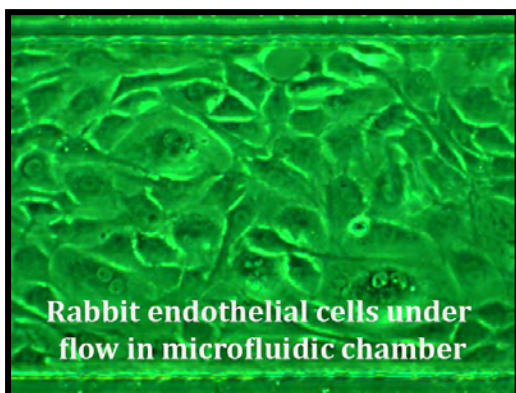
HiQ Flowmate™ Fluid Control System



Biochip Cassette and Holder

Applications:

- Fluid shear stress applications
- Micro and Nanofluidics
- Diluting, dispensing, and injecting applications
- Animal drug infusion or fluid withdrawal
- Mixing and proportioning fluids



Rabbit endothelial cells under flow in microfluidic chamber

Fluid flow specifications:

Syringe Volume	ID (mm)	Maximum Flow Rate (μL/min)	Minimum Flow Rate (μL/min)
1 μL	0.15	0.74	0.000004
2 μL	0.21	1.45	0.000009
5 μL	0.33	3.59	0.000021
10 μL	0.46	6.98	0.000042
25 μL	0.73	17.58	0.000105
50 μL	1.03	35.00	0.000208
100 μL	1.46	70.31	0.000419
250 μL	2.30	174.50	0.001039
1 mL	4.61	701.04	0.004173
3 mL	8.66	2473.86	0.014725
5 mL	10.30	3499.56	0.020831
10 mL	14.57	7002.58	0.041682

Culturing Cells in a Mechanically Active Environment™

Flexcell International Corporation • 437 Dimmocks Mill Road, Suite 28 • Hillsborough, NC 27278
800-728-3714 • (919) 732-1591 • FAX: (919) 732-5196 • www.flexcellint.com